

Otolith Marking Kokanee Eggs Using Ice and Shallow Troughs









Scope of Work

Included

The kokanee will be otolith marked, or marked by some other acceptable method, to allow for identification of these fish in the future

Washington Department of



FISH and WILDLIFE

Chambers Creek Hatchery









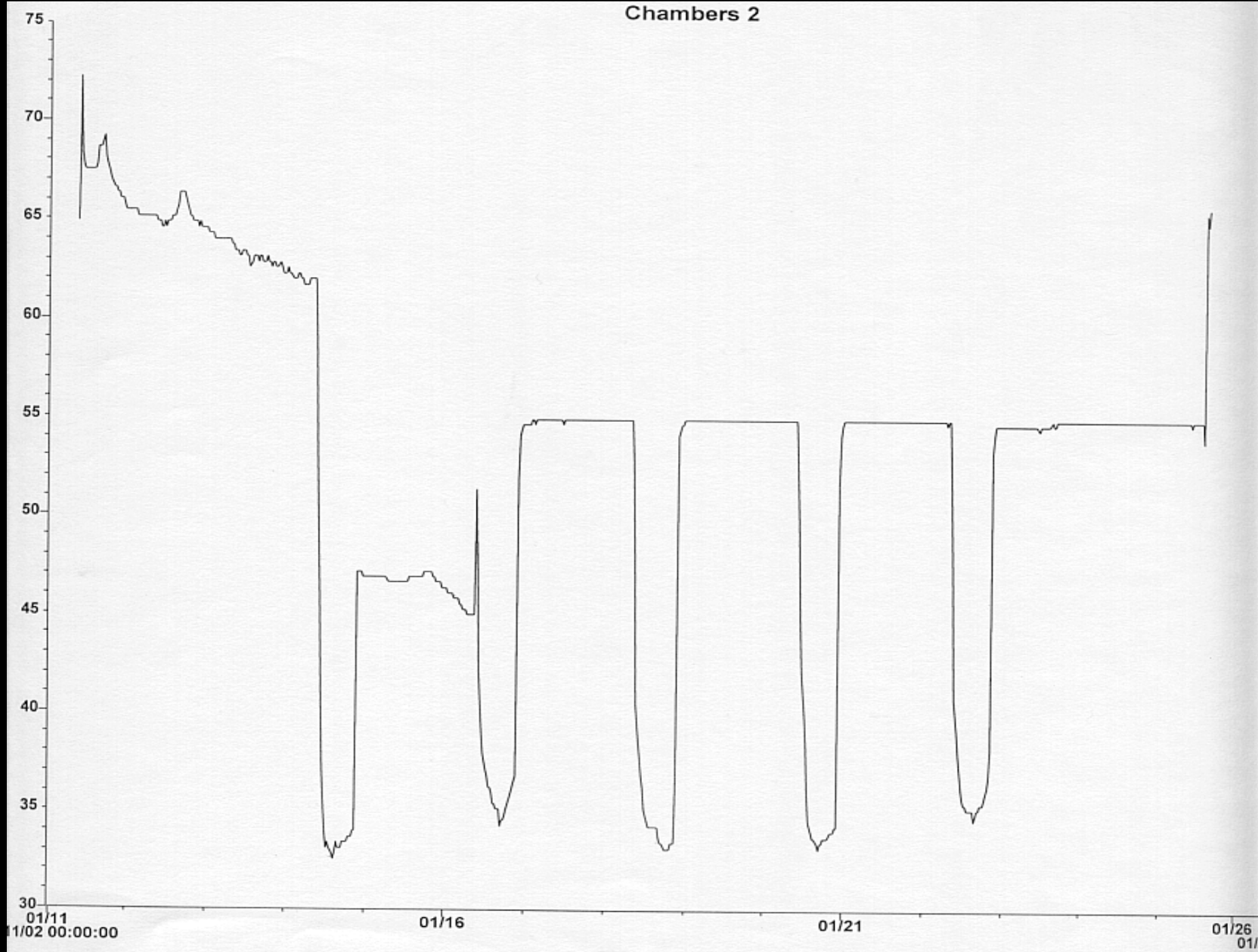






Otolith Marking 2001 Lake Whatcom Kokanee For Alder Lake Project										
Date	Egg Number	Estimated TU's	Time Eggs In	Temperature (F)			Treatment Time		Temperature(F)	
				Initial	One Hour	Air	Eggs Out	Hours	Removal	One Hour
01/16/2002	765,100	842	0900	56	40	45	2100	12	41	56
01/18/2002	765,100	886	0900	56	38	45	2100	12	38	56
01/20/2002	765,100	930	1030	56	40	48	2230	12	39	56
01/22/2002	765,100	972	0830	56	39	45	2030	12	40	56

Chambers 2











In Summary

- Excellent thermal otolith marks on kokanee salmon were produced using a low cost process of chilling eyed eggs by using shallow baskets, ice and troughs.
- A rapid temperature drop and chilling duration of 12 hours was sufficient to produce satisfactory banding patterns for stock or group identification
- At release, product quality was high and program goals were achieved

